

MESHING THE TWO WORLDS OF TECHNOLOGY AND BANKING

TODD NELSON

Business Development Officer

LightStream



EVOLUTION

Online lending is evolving and maturing

- banks are reclaiming marketshare
- lenders are diversifying into other products
- marketplace lenders are seeking bank partnerships



BUILD

BUY

PARTNER

BUILD

BUY

PARTNER

BUILD

BUY

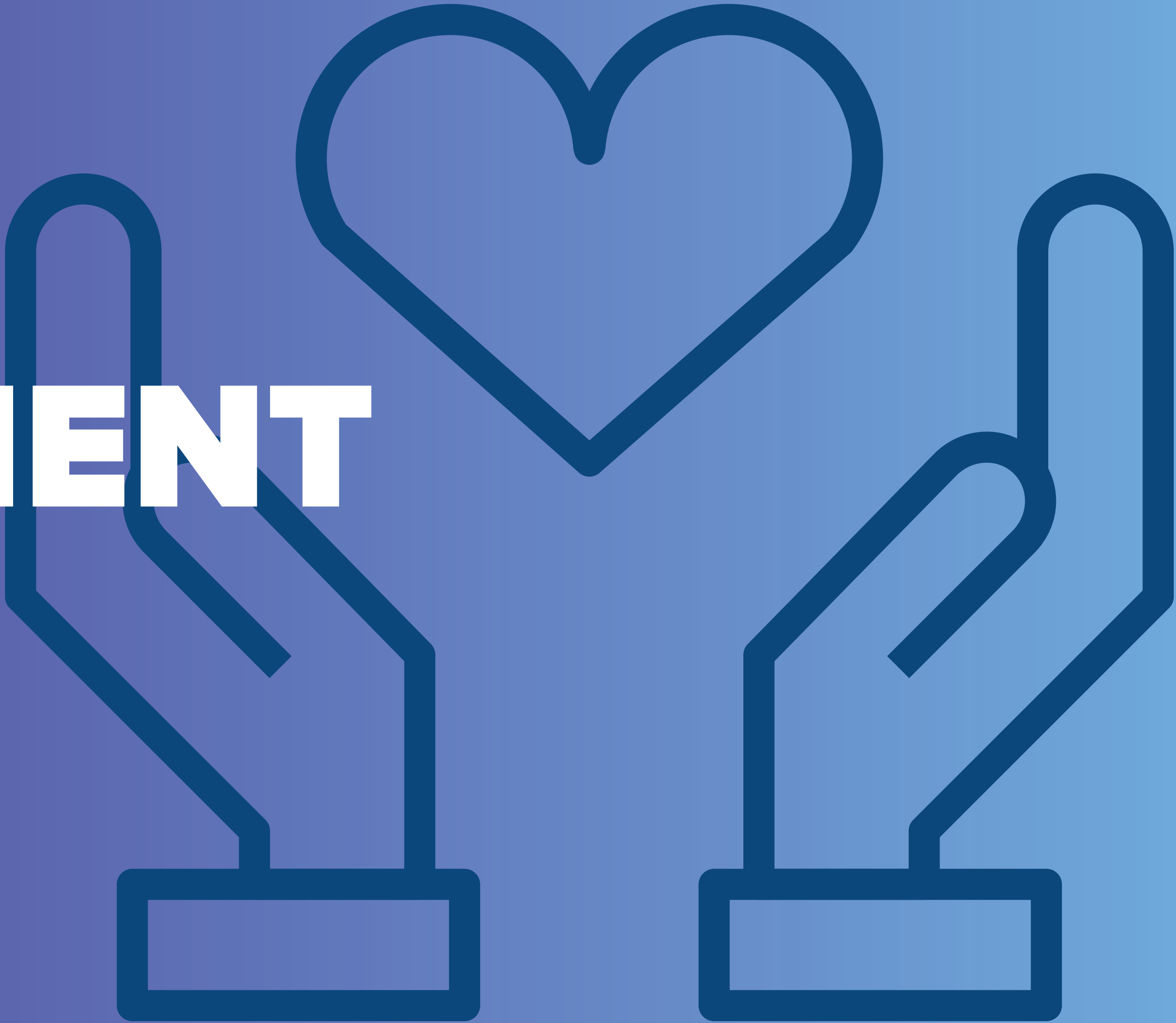
PARTNER

**DISPLAY, CO-REGISTRATION, PPC,
SPONSORED CONTENT, LEAD GENERATION,
AGGREGATION, TRAFFIC, AFFILIATE, CO-BRAND,
PRIVATE LABEL, AGENT, PASS-THROUGH**

PARTNERSHIP



BUSINESS DEVELOPMENT



PARTNERSHIP CRITERIA



**PARTNERSHIP HAS BEEN AND
WILL CONTINUE TO BE A SIGNIFICANT
PRESENCE IN ONLINE LENDING.**



THANK YOU

TODD NELSON

Business Development Officer
LightStream (SunTrust Bank)

LightStream.com

Todd.nelson@lightstream.com